

Anti-Myc mlgG2a Antibody

Product Information

Product Name: Anti-Myc mlgG2a Antibody

Product Number: **GM-77429AB**

Storage temp. Store at 4°C short term. Store at -20°C long term (5 Years), avoiding freeze/thaw cycles.

Product Specification: GM-77429AB-10
GM-77429AB-100
GM-77429AB-1000

Antibody Information

Source/Isotype Monoclonal Mouse IgG2a

Species Reactivity Tag

Conjugate Unconjugated

Other Names /

Application Western blot: 1:500-1:2000; FC-Quality tested

Background A myc tag is a polypeptide protein tag derived from the c-myc gene product that can be added to a protein using recombinant DNA technology. It can be used for affinity chromatography, then used to separate recombinant, overexpressed protein from wild type protein expressed by the host organism. It can also be used in the isolation of protein complexes with multiple subunits. A myc tag can be used in many different assays that require recognition by an antibody. If there is no antibody against the studied protein, adding a myc-tag allows one to follow the protein with an antibody against the Myc epitope. Examples are cellulite localization studies by immunofluorescence or detection by Western blotting. The peptide sequence of the myc-tag is (in 1- and 3-letter codes, respectively): EQKLISEEDL and Glu-Gln-Lys-Leu-Ile-Ser-Glu-Glu-Asp-Leu. It can be fused to the C-terminus and the N-terminus of a protein.

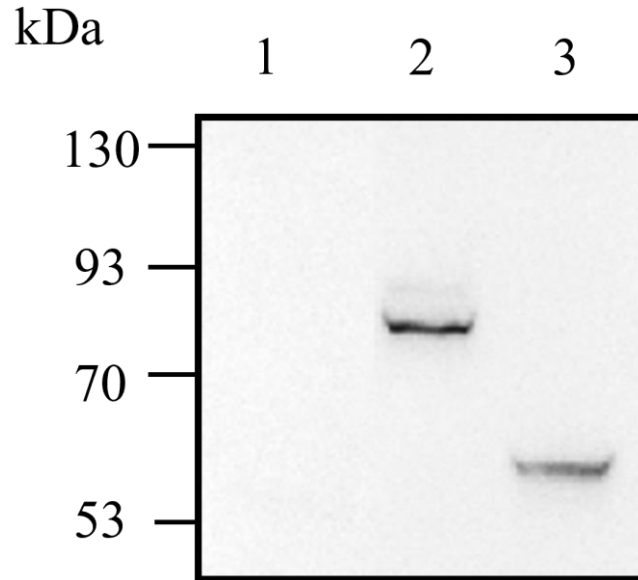
Formulation 20mM Histine, 50% glycerinum, 0.05% Bacteriostatic preservative, pH 6.0.

Version:2.1 Revision Date:10/10/2022

Data Examples

Western Blot

After the whole protein was extracted from different cells, WB experiment was conducted, and Anti-Myc mIgG2a Antibody (Catalog # GM-77429AB) (diluted 1:1000) were used for overnight incubation at 4°C. HRP was coupled with secondary antibody and incubated at room temperature for 2 h before development



Lane 1: Parental cell (HEK-293)

Lane 2: N-term Myc-tagged protein A/HEK-293

Lane 3: C-term Myc-tagged protein B/HEK-293

Version:2.1 Revision Date:10/10/2022